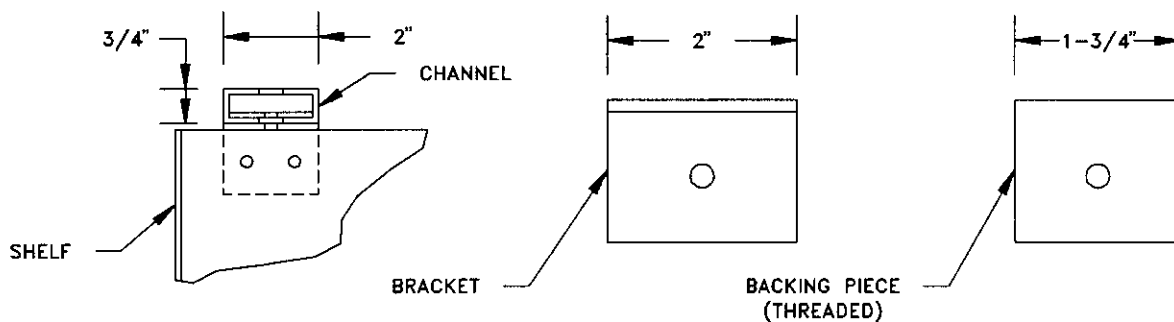
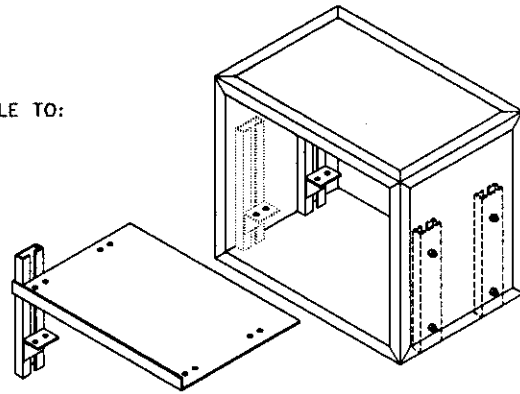


#### ADJUSTABLE SHELF CHANNEL SYSTEM

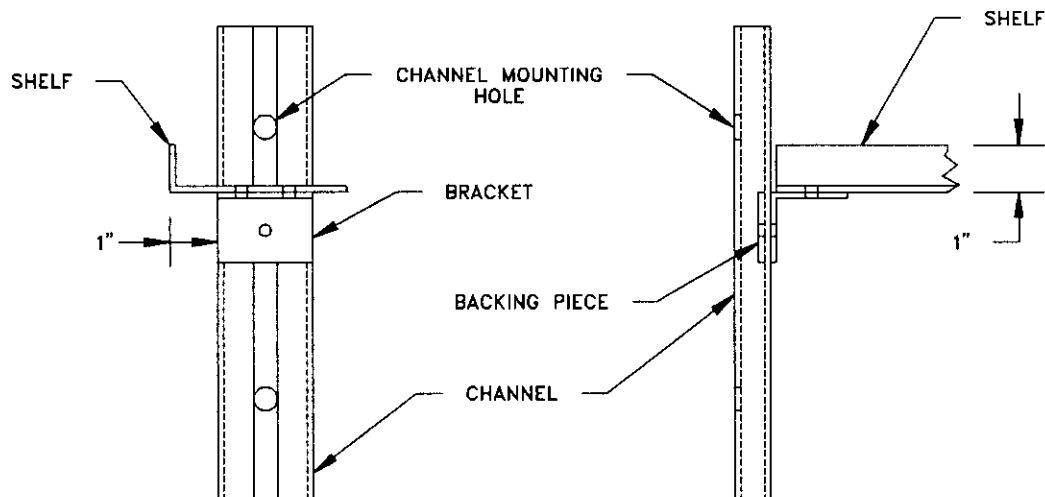
1. CHANNEL SYSTEM TO BE EQUAL TO THOSE AVAILABLE TO:

GRUMMAN EMERGENCY PRODUCTS, INC.  
1723 SEIBEL DR., NE  
ROANOKE VA 24012-5688  
(703) 982-6666 FAX: (703) 985-2280

2. INSTALL FOUR CHANNELS, TWO ON EACH SIDE LEAVING FOUR INCHES CLEARANCE AT TOP FOR INSERTING SHELF AND BRACKETS.
3. INSTALL BRACKETS AND BACKING PIECES (4).
4. REMOVE BRACKETS AND SHELF; DRILL HOLES IN SHELF; BOLT SHELF TO BRACKETS; INSTALL SHELF IN CABINET.



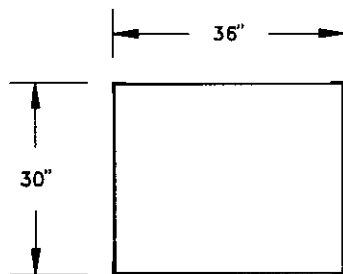
**PLAN**



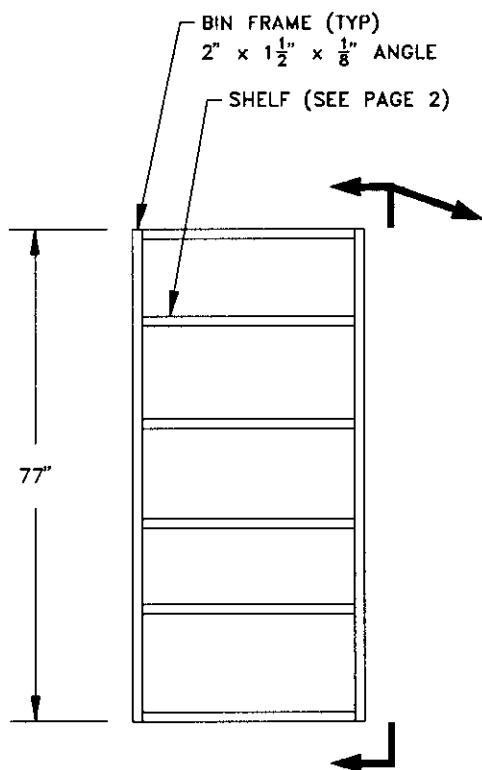
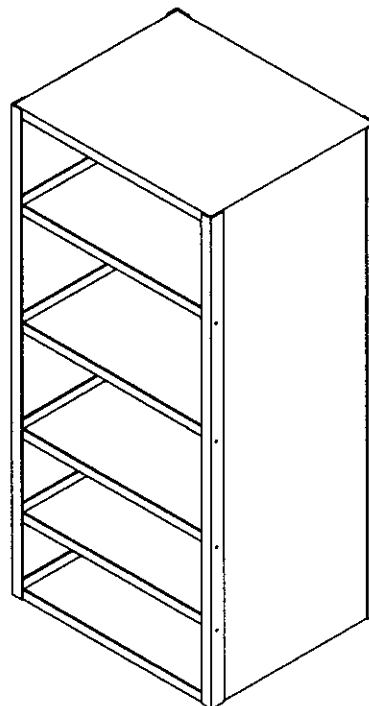
**ELEVATION**

**SIDE VIEW**

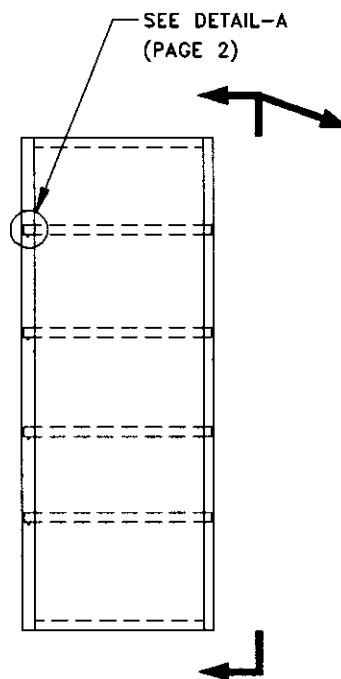
**DAMAGE CONTROL EQUIPMENT STOWAGE SKETCH # 001**  
**ADJUSTABLE SHELVES**  
**VERSION 1**



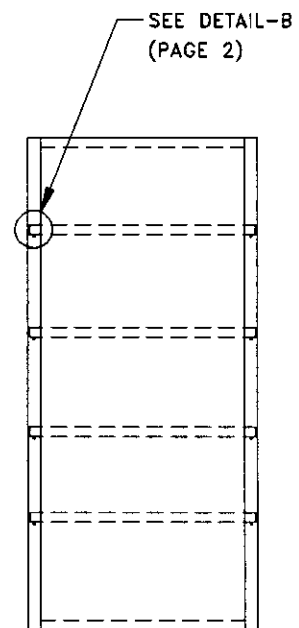
**PLAN**



**ELEVATION**

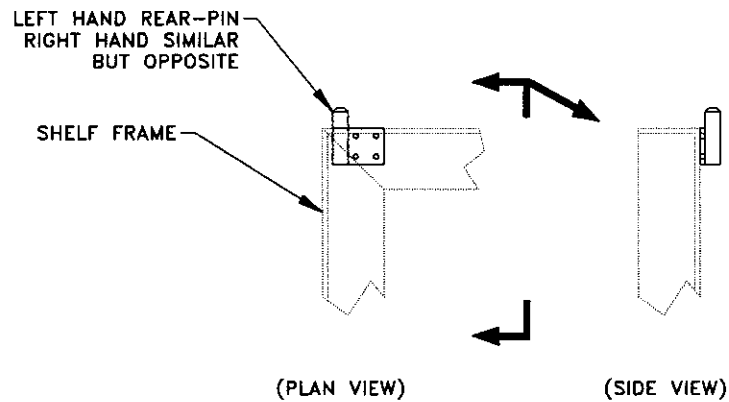
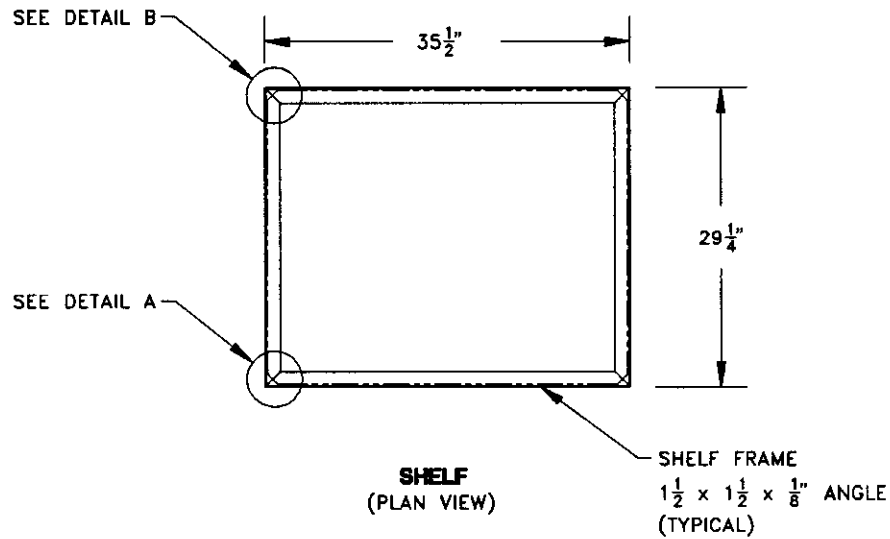


**SIDE VIEW**

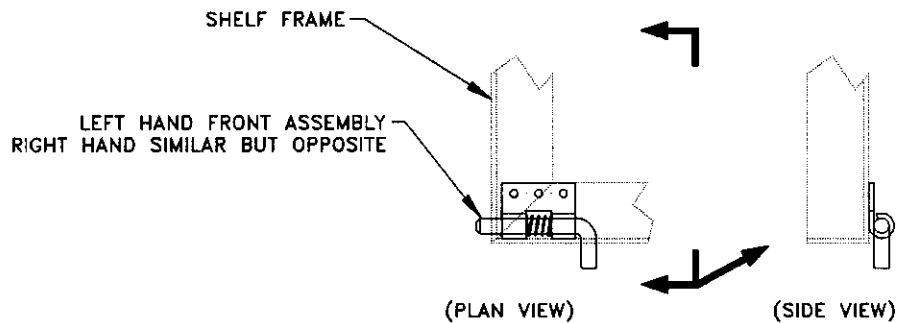


**BACK VIEW**

**DAMAGE CONTROL EQUIPMENT STOWAGE SKETCH # 002**  
**ADJUSTABLE SHELVES, VERSION 2**  
**(PAGE 1 OF 2)**



**DETAIL B**



**DETAIL A**

**DAMAGE CONTROL EQUIPMENT STOWAGE SKETCH # 002**  
**ADJUSTABLE SHELVES, VERSION 2**  
**(PAGE 2 OF 2)**