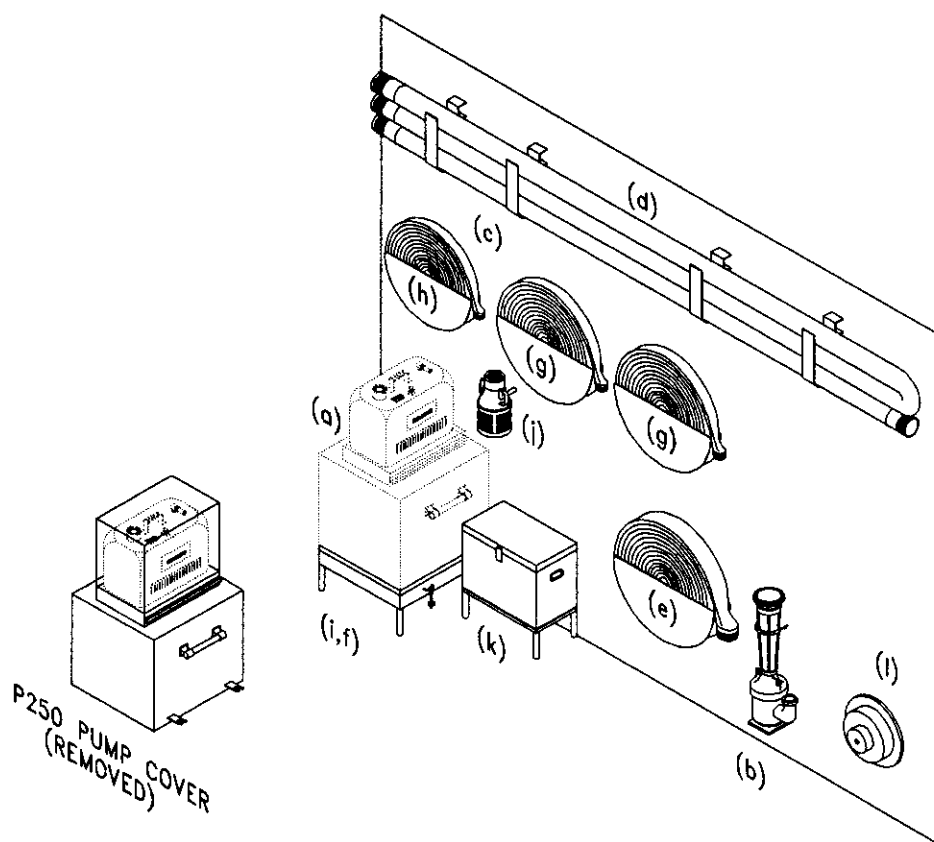


- (a) 1 CAN, FUEL
- (b) 1 EDUCTOR (PERI-JET)
- (c) 1 HOSE ASSEMBLY 3" x 10'
- (d) 1 HOSE ASSEMBLY 2" x 20'
- (e) 1 HOSE ASSEMBLY 4" x 50'
- (f) 1 HOSE ASSEMBLY 2-1/2" x 2-1/2' (STOWED WITH P250 PUMP)
- (g) 2 HOSE ASSEMBLY 2-1/2" x 50'
- (h) 1 HOSE ASSEMBLY 1-1/2" x 50'
- (i) 1 PUMP - P250
- (j) 1 VALVE - FOOT
- (k) 1 ACCESSORIES CHEST
- (l) 1 OVERBOARD DISCHARGE



NOTE:

1. EQUIPMENT BRACKET FOUNDATIONS INSTALLED 6" ABOVE DECK.
2. HORIZONTAL DISTANCE BETWEEN EQUIPMENT APPROX. 4".
3. VERTICAL DISTANCE BETWEEN EQUIPMENT APPROX. 2".
4. TOTAL SPACE REQUIREMENTS - 76"W x 80"H x 21"D.

DAMAGE CONTROL EQUIPMENT STOWAGE SKETCH # 017

DEWATERING EQUIPMENT PLAN #3A

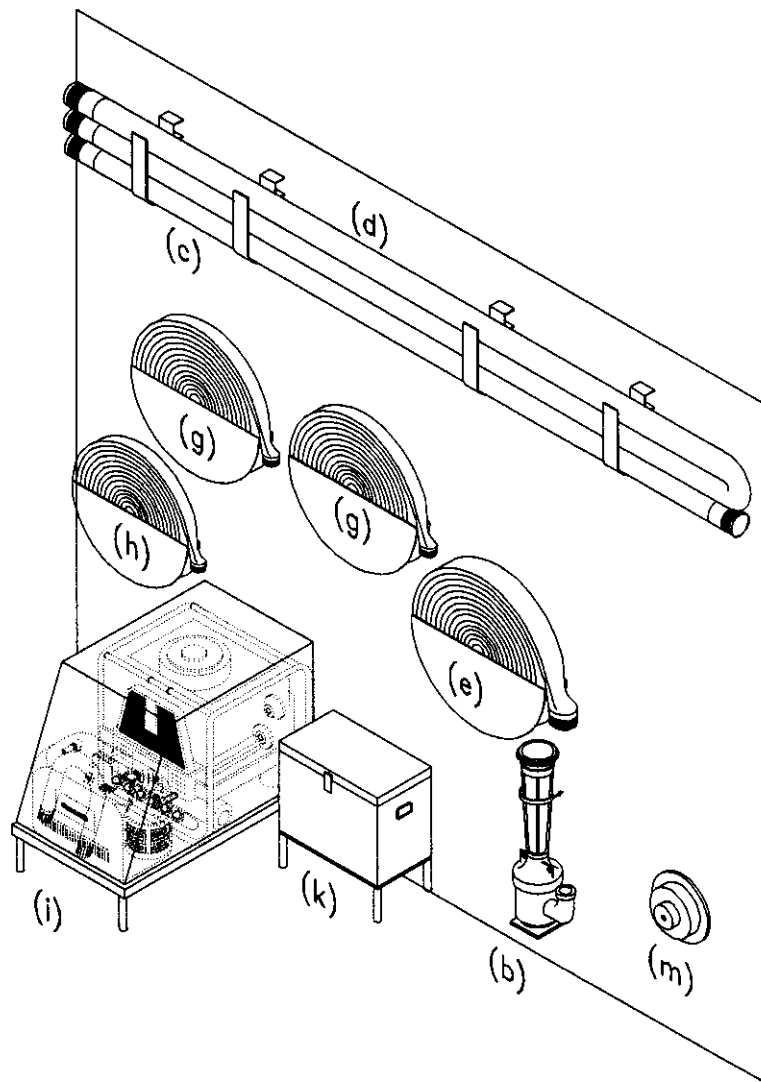
P250 PUMP AND ACCESSORIES

-
- Diagram illustrating the components of the P250 pump assembly, labeled (a) through (l):
- (a) Pump housing
 - (b) Motor assembly
 - (c) Impeller (h)
 - (d) Drive shaft
 - (e) Impeller (g)
 - (f) Impeller (g)
 - (g) Impeller (g)
 - (h) Impeller (h)
 - (i) Impeller (g)
 - (j) Impeller (g)
 - (k) Motor base
 - (l) Motor base
- NOTE:

1. EQUIPMENT BRACKET FOUNDATIONS INSTALLED 6" ABOVE DECK.
2. HORIZONTAL DISTANCE BETWEEN EQUIPMENT APPROX. 4".
3. VERTICAL DISTANCE BETWEEN EQUIPMENT APPROX. 2".
4. TOTAL SPACE REQUIREMENTS - 76"W x 80"H x 21"D.

PROCESS018

- (a) 1 CAN, FUEL (STOWED WITH PUMP P250)
- (b) 1 EDUCTOR (PERI-JET)
- (c) 1 HOSE ASSEMBLY 3" x 10'
- (d) 1 HOSE ASSEMBLY 2" x 20'
- (e) 1 HOSE ASSEMBLY 4" x 50'
- (f) 1 HOSE ASSEMBLY 2-1/2" x 2-1/2' (STOWED WITH PUMP P250)
- (g) 2 HOSE ASSEMBLY 2-1/2" x 50'
- (h) 1 HOSE ASSEMBLY 1-1/2" x 50'
- (i) 1 PUMP - P250
- (j) 1 VALVE - FOOT (STOWED WITH PUMP P250)
- (k) 1 ACCESSORIES CHEST
- (l) 1 TRI-GATE CONNECTION (STOWED WITH PUMP P250)
- (m) 1 OVERBOARD DISCHARGE CONNECTION



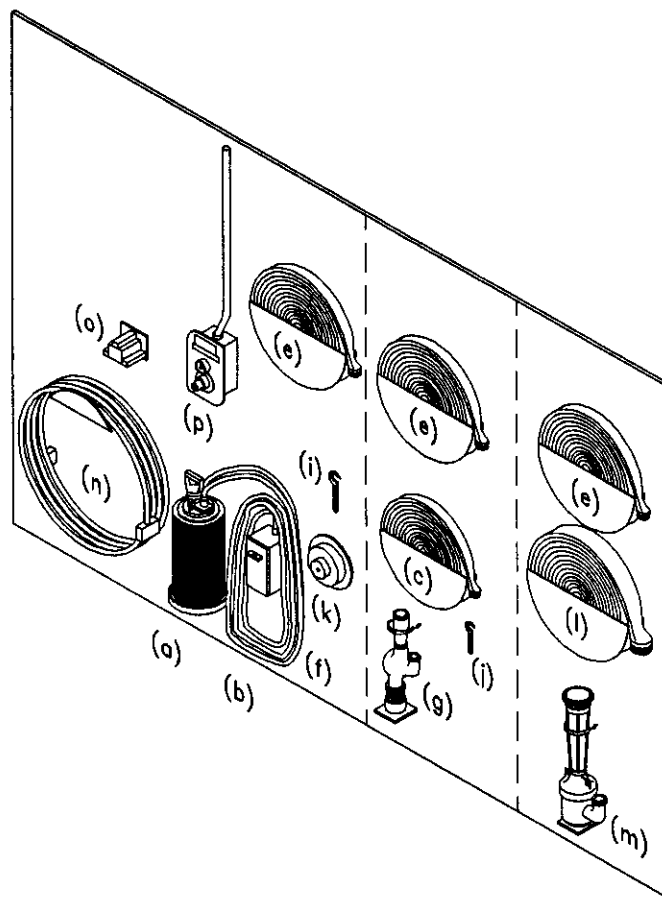
NOTE:

1. EQUIPMENT BRACKET FOUNDATIONS INSTALLED 6" ABOVE DECK.
2. HORIZONTAL DISTANCE BETWEEN EQUIPMENT IS 4".
3. VERTICAL DISTANCE BETWEEN EQUIPMENT IS 2".
4. TOTAL SPACE REQUIREMENTS - 76"W x 80"H x 21"D.

DAMAGE CONTROL EQUIPMENT STOWAGE SKETCH # 019

DEWATERING EQUIPMENT PLAN #3C P250 PUMP AND ACCESSORIES

- (a) 1 PUMP, SUBMERSIBLE
- (b) 1 CABLE ASSEMBLY, 50' (ATTACHED TO SUB-PUMP)
- (c) 2 HOSE ASSEMBLY 1-1/2" x 50' (DOUBLE RACK)
- (d) 2 HOSE ASSEMBLY 2-1/2" x 10' (STOWED WITH P250 HOSE ASSY)
- (e) 2 HOSE ASSEMBLY 2-1/2" x 50'
- (f) 1 ROPE, NYLON 2" x 50' (ATTACHED TO SUB-PUMP)
- (g) 1 EDUCTOR 2-1/2" DISCHARGE
- (h) 1 STRAINER, SUCTION FIREHOSE (ATTACHED TO 2-1/2" HARD RUBBER HOSE)
- (i) 1 WRENCH SPANNER 2" TO 4-3/4"
- (j) 1 WRENCH SPANNER 3/4" TO 2"
- (k) 1 OVERBOARD DISCHARGE
- (l) 1 HOSE ASSEMBLY 4" x 50'
- (m) 1 EDUCTOR 4" DISCHARGE (PERI-JET)
- (n) 1 CASUALTY POWER CABLE
- (o) 1 CASUALTY POWER CONNECTION
- (p) 1 ADAPTER DBLM 4"



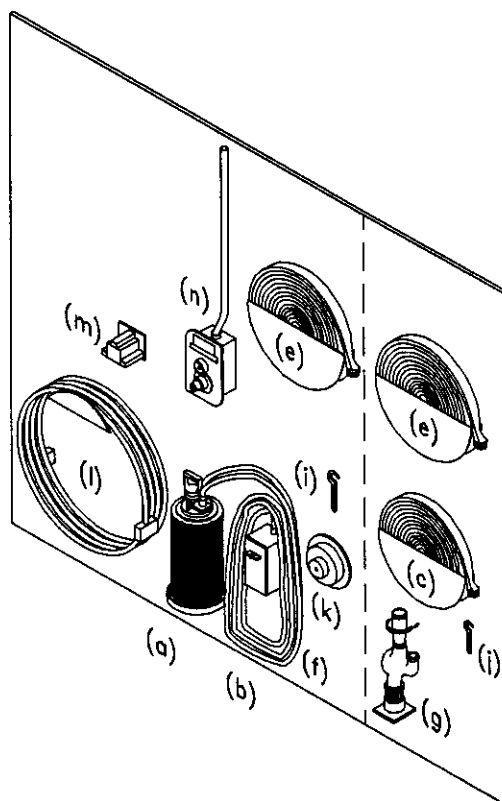
NOTE:

1. EQUIPMENT BRACKET FOUNDATIONS INSTALLED 6" ABOVE DECK.
2. HORIZONTAL DISTANCE BETWEEN EQUIPMENT APPROX. 4".
3. VERTICAL DISTANCE BETWEEN EQUIPMENT APPROX. 2".
4. TOTAL SPACE REQUIREMENTS - 76"W x 66"H x 21"D.

DAMAGE CONTROL EQUIPMENT STOWAGE SKETCH # 020

DEWATERING EQUIPMENT PLAN #3D

- (a) 1 PUMP, SUBMERSIBLE
- (b) 1 CABLE ASSEMBLY, 50' (ATTACHED TO SUB-PUMP)
- (c) 2 HOSE ASSEMBLY 1-1/2" x 50' (DOUBLE RACK)
- (d) 2 HOSE ASSEMBLY 2-1/2" x 10' (STOWED WITH P250 HOSE ASSY)
- (e) 2 HOSE ASSEMBLY 2-1/2" x 50'
- (f) 1 ROPE, NYLON 2" x 50' (ATTACHED TO SUB-PUMP)
- (g) 1 EDUCTOR 2-1/2" DISCHARGE
- (h) 1 STRAINER, SUCTION FIREHOSE (ATTACHED TO 2-1/2" HARD RUBBER HOSE)
- (i) 1 WRENCH SPANNER 2" TO 4-3/4"
- (j) 1 WRENCH SPANNER 3/4" TO 2"
- (k) 1 OVERBOARD DISCHARGE
- (l) 1 CASUALTY POWER CABLE
- (m) 1 CASUALTY POWER CONNECTION
- (n) 1 ADAPTER DBLM 4"



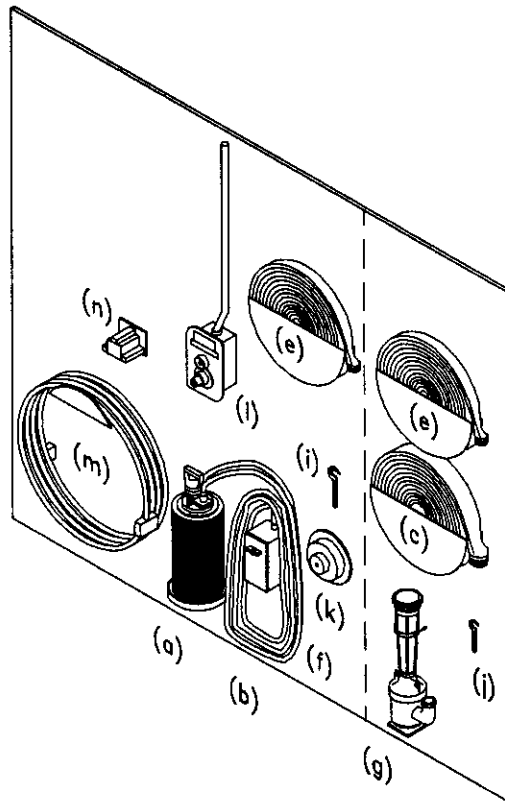
NOTE:

1. EQUIPMENT BRACKET FOUNDATIONS INSTALLED 6" ABOVE DECK.
2. HORIZONTAL DISTANCE BETWEEN EQUIPMENT APPROX. 4".
3. VERTICAL DISTANCE BETWEEN EQUIPMENT APPROX. 2".
4. TOTAL SPACE REQUIREMENTS - 76"W x 66"H x 21"D.

DAMAGE CONTROL EQUIPMENT STOWAGE SKETCH # 021

DEWATERING EQUIPMENT PLAN #3E

- (a) 1 PUMP, SUBMERSIBLE
- (b) 1 CABLE ASSEMBLY, 50' (ATTACHED TO SUB-PUMP)
- (c) 1 HOSE ASSEMBLY 4" x 50'
- (d) 2 HOSE ASSEMBLY 2-1/2" x 10' (STOWED WITH P250 HOSE ASSY)
- (e) 2 HOSE ASSEMBLY 2-1/2" x 50'
- (f) 1 ROPE, NYLON 2" x 50' (ATTACHED TO SUB-PUMP)
- (g) 1 EDUCTOR 4" DISCHARGE (PERI-JET)
- (h) 1 STRAINER, SUCTION FIREHOSE (ATTACHED TO 2-1/2" HARD RUBBER HOSE)
- (i) 1 WRENCH SPANNER 2" TO 4-3/4"
- (j) 1 WRENCH SPANNER 3/4" TO 2"
- (k) 1 OVERBOARD DISCHARGE
- (l) 1 ADAPTER DBLM 4"
- (m) 1 CASUALTY POWER CABLE
- (n) 1 CASUALTY POWER CONNECTION



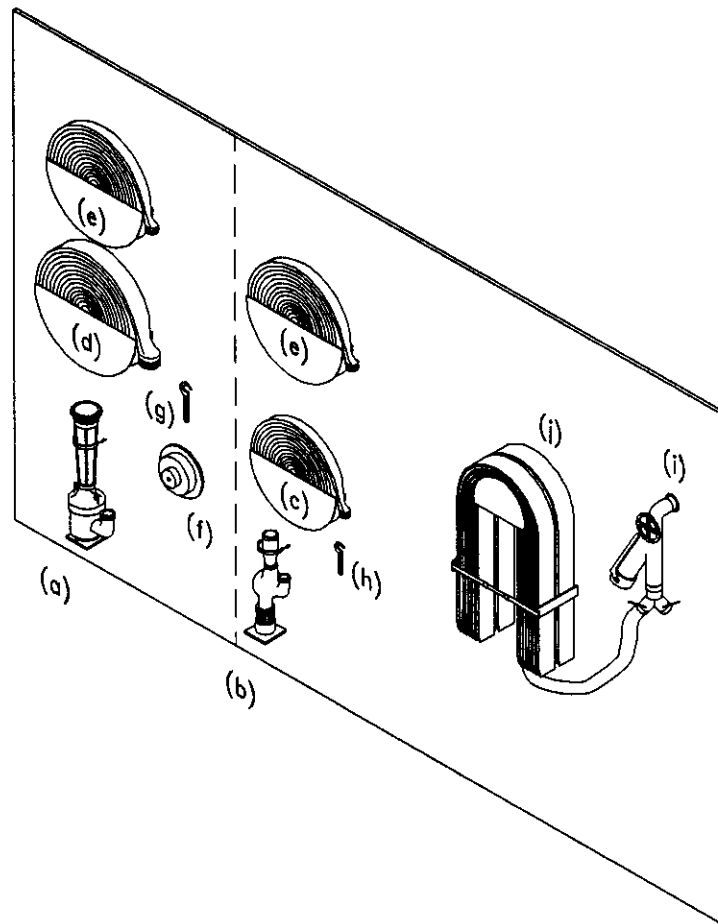
NOTE:

1. EQUIPMENT BRACKET FOUNDATIONS INSTALLED 6" ABOVE DECK.
2. HORIZONTAL DISTANCE BETWEEN EQUIPMENT APPROX. 4".
3. VERTICAL DISTANCE BETWEEN EQUIPMENT APPROX. 2".
4. TOTAL SPACE REQUIREMENTS - 76"W x 60"H x 21"D.

DAMAGE CONTROL EQUIPMENT STOWAGE SKETCH # 022

DEWATERING EQUIPMENT PLAN #3F

- (a) 1 EDUCTOR 4" DISCHARGE (PERI-JET)
- (b) 1 EDUCTOR 2-1/2" DISCHARGE
- (c) 1 HOSE ASSEMBLY 1-1/2" x 50'
- (d) 1 HOSE ASSEMBLY 4" x 50'
- (e) 2 HOSE ASSEMBLY 2-1/2" x 50'
- (f) 1 OVERBOARD DISCHARGE
- (g) 1 WRENCH SPANNER 2" x 4-3/4"
- (h) 1 WRENCH SPANNER 3/4" x 2"
- (i) 1 FIRE PLUG, 1-1/2"
- (j) 2 HOSE ASSEMBLY, 1-1/2" x 50'



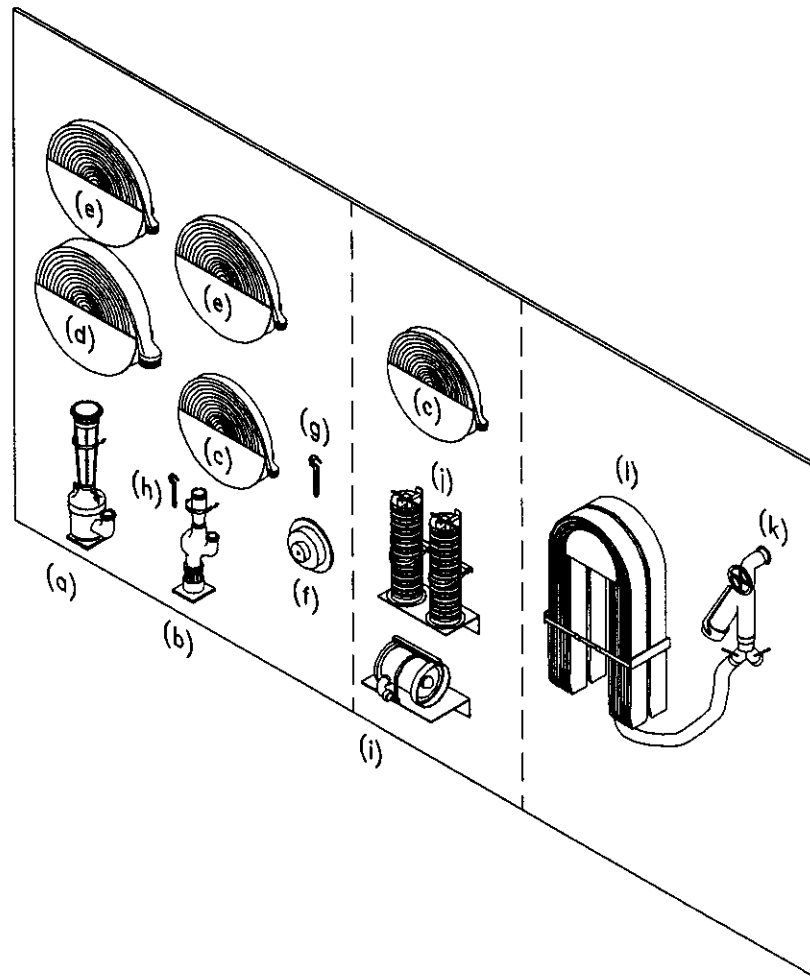
NOTE:

1. EQUIPMENT BRACKET FOUNDATIONS INSTALLED 6" ABOVE DECK.
2. HORIZONTAL DISTANCE BETWEEN EQUIPMENT APPROX. 4".
3. VERTICAL DISTANCE BETWEEN EQUIPMENT APPROX. 2".
4. TOTAL SPACE REQUIREMENTS - 76"W x 66"H x 21"D.

DAMAGE CONTROL EQUIPMENT STOWAGE SKETCH # 023

DEWATERING EQUIPMENT PLAN #3G

- (a) 1 EDUCTOR 4" DISCHARGE (PERI-JET)
- (b) 1 EDUCTOR 2-1/2" DISCHARGE
- (c) 2 HOSE ASSEMBLY 1-1/2" x 50'
- (d) 1 HOSE ASSEMBLY 4" x 50'
- (e) 2 HOSE ASSEMBLY 2-1/2" x 50'
- (f) 1 OVERBOARD DISCHARGE
- (g) 1 WRENCH SPANNER 2" x 4-3/4"
- (h) 1 WRENCH SPANNER 3/4" x 2"
- (i) 1 RAM FAN, WATER DRIVEN
- (j) 2 HOSE AIRDUCT
- (k) 1 FIRE PLUG, 1-1/2"
- (l) 2 HOSE ASSEMBLY, 1-1/2" x 50'



NOTE:

1. EQUIPMENT BRACKET FOUNDATIONS INSTALLED 6" ABOVE DECK.
2. HORIZONTAL DISTANCE BETWEEN EQUIPMENT APPROX. 4".
3. VERTICAL DISTANCE BETWEEN EQUIPMENT APPROX. 2".
4. TOTAL SPACE REQUIREMENTS - 76"W x 66"H x 21"D.

DAMAGE CONTROL EQUIPMENT STOWAGE SKETCH # 024

DEWATERING EQUIPMENT PLAN #3H