

**DELETE
This Kit**

**ELECTRICAL CABLE
REPAIR
KIT**

AEL Range: 2-880044242

A laminated inventory list should be provided with this kit.

ELECTRICAL CABLE REPAIR KIT

Quantity
Required

KIT - ELECTRICAL CABLE REPAIR-DC

1H M0000-LL-CQA-2448

This kit identifies equipment used for the function of making electrical cable repair. For more information, see Electrical Cable Repair Crimping Tool-HYDRA, Electrical Cable Repair Crimping Tool-STRIPPER, Electrical Cable Repair Manuals (OPER X TOOLS, OPER X SERV), and Electrical Cable Repair Kit in this section.

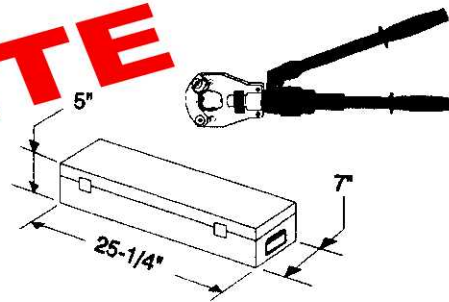
Eng
DCRS
only

Helpful Hints: This complete kit has been provided to some ships.

ELECTRICAL CABLE REPAIR -
CRIMPING TOOL - HYDRA

NSN 5180-01-220-1807
1HS0000-LL-CQA-0132

WT. 60.0 lbs. VOL. 892.5 in³



1

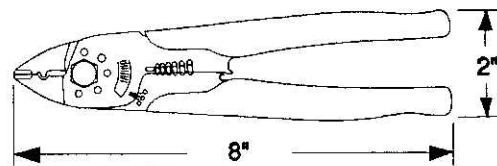
Helpful Hints:

Actual Inventory:

ELECTRICAL CABLE REPAIR -
CRIMPING TOOL - WIRE STRIPPER

1HM0000-LL-CQA-0003

WT. 0.5 lbs. VOL. 4.0 in³



1

Helpful Hints:

Actual Inventory:

ELECTRICAL CABLE REPAIR KIT

Quantity
Required

ELECTRICAL CABLE REPAIR-MANUAL -
OPER X TOOL

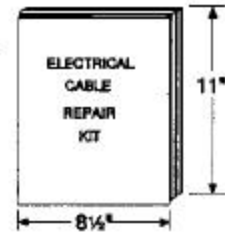
1HS0000-LL-CQA-0135

WT. 1.5 lbs.

VOL. 46.8 in³

Helpful Hints:

1/2"
Thick



1

DELETE

Actual Inventory:

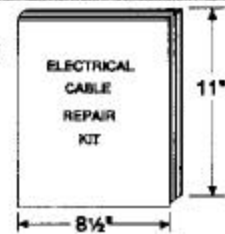
ELECTRICAL CABLE REPAIR-MANUAL -
OPER X SERV
1HS0000-LL-CQA-0136

WT. 1.5 lbs.

VOL. 46.8 in³

Helpful Hints:

1/2"
Thick



1

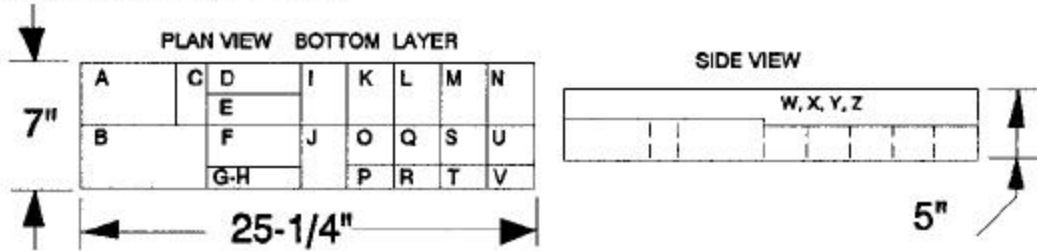
DELETE

Actual Inventory:

ELECTRICAL CABLE REPAIR KIT

Quantity
Required

ELECTRICAL CABLE REPAIR - KIT



- 1HS0000-LL-CQA-0139 A - Compression Splice 500 MCM Max. 4/0 Min. AWG
 1HS0000-LL-CQA-0141 B - Compression Terminal 500 MCM Max. 4/0 Min. AWG
 1HM0000-LL-CQA-0014 C - Compression Terminal 1/0 Max. #6 Min. AWG
 NSN 5940-01-186-0063 D - Compression Terminal 3/0 Max. #2 Min. AWG
 1HM0000-LL-CQA-0015 E - Compression Terminal #2 Max. #8 Min. AWG
 1HS0000-LL-CQA-0140 F - Compression Terminal 250 MCM Max. 1/0 Min.
 1HS0000-LL-CQA-0134 G - Repair Kit
 1HS0000-LL-CQA-0133 H - Test Gage and Slugs
 1HM0000-LL-CQA-0010 I - Compression Splice 1/0 Max. #8 Min.
 1HS0000-LL-CQA-0138 J - Compression Splice 250 MCM Max. #1/0 Min.
 1HM0000-LL-CQA-0011 K - Compression Splice 3/0 Max. #4 Min.
 1HM0000-LL-CQA-0009 L - Compression Splice #2 Max. #8 Min.
 1HM0000-LL-CQA-0013 M - Compression Terminal #6 Max. #8 Min.
 1HM0000-LL-CQA-0008 N - Compression Splice #6 Max. #8 Min.
 1HS0000-LL-CQA-0142 O - Butt Splice #12 - #10
 NSN 5940-01-087-0285 P - Locking Spade #16 - #14, #10 Stud
 1HM0000-LL-CQA-0018 Q - Butt Splice #16 - #14
 NSN 5940-01-078-2936 R - Locking Spade #16 - #14, #8 Stud
 NSN 5940-00-551-2446 S - Locking Spade #16 - #10, #10 Stud
 1HM0000-LL-CQA-0020 T - Locking Spade #22 - #18, #8 Stud
 NSN 5940-00-143-5147 U - Butt Splice #22 - #18
 NSN 5940-01-008-6728 V - Locking Spade #22 - #28, #6 Stud
 1HS0000-LL-CQA-0132 W - Hydraulic Tool #6 - 750 MCM AWG
 1HM0000-LL-CQA-0003 X - Manual Crimping Tool #22 - #10 AWG
 1HM0000-LL-CQA-0004 Y - Tool Oil - 1/2 Pt
 1HS0000-LL-CQA-0137 Z - Technical Manual

WT. 60.0 lbs. VOL. 883.7 in³

Helpful Hints:

Actual Inventory: